

RUSTIC AMERICAN HOME DESIGN

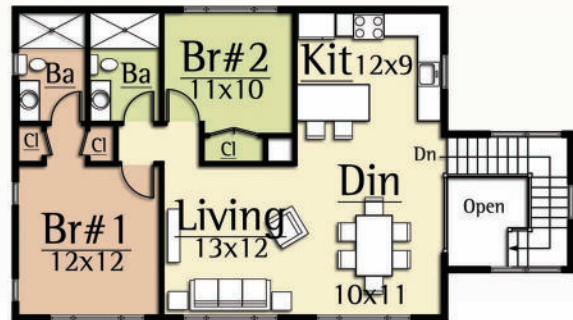
ELM CARRIAGE HOUSE



Copyright 2012 MossCreek
 www.MossCreek.net
 800.737.2166

A carriage house is an outbuilding which was originally built to house horse-drawn carriages and the related tack. There is very little need in the modern world for true carriage houses. Accordingly, many carriage houses have been modified to other uses such as secondary suites and guest houses. Even today, such structures are still often called carriage houses in deference to their original function and regardless of their current use.

More than just a garage, the Elm Carriage House combines automobile storage and living into one compact design. The Elm features 2 bedrooms and 2 baths, and a 3 car garage. A large Living Room with exposed timbers and an open Kitchen / Dining Room complete a dramatic interior. Exterior timber, stone, and shingle detailing complete the feel of this perfect rustic getaway.



Upper Level
 1,058 square feet



Main Level
 122 square feet

ELM CARRIAGE HOUSE
1,180 total square feet