



## ION IV

CONTEMPORARY

*2,878 total square feet*

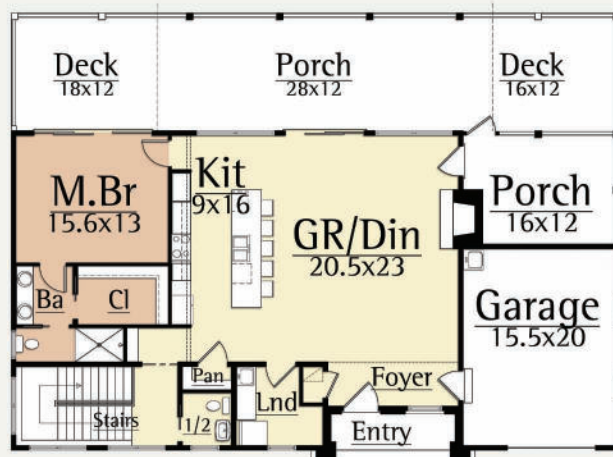
*3 Br, 3.5 Ba*

The Ion IV design by MossCreek is perfect for a small lot with a steep slope. The shallow depth and main/lower level design creates a robust amount of living in a small amount of square footage.

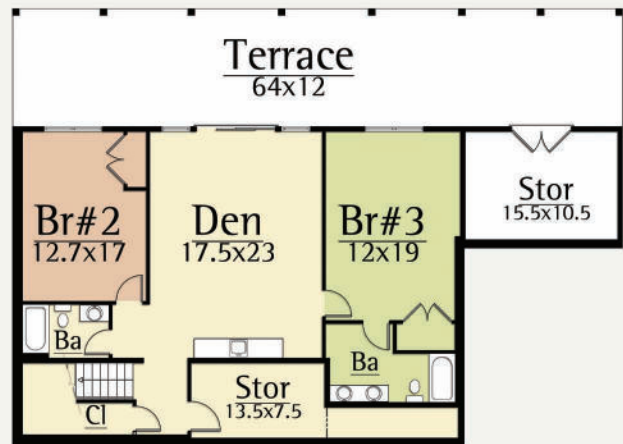
The contemporary exterior of the Ion IV is full of expressive roof lines and a mix of wood and stone siding. This organic approach ensures that this contemporary design nestles well in any natural setting.

The Ion IV interior features a main level with spacious open living, master suite, and laundry areas. A gracious screened porch creates outdoor opportunities free from insects.

On the lower level, the Ion IV includes two guest bedrooms, terrace, and a large den that doubles as a second great room.



Main Level  
*1,439 square feet*



Lower Level  
*1,439 square feet*



MODERN HOME DESIGN

www.MossCreekModern.com - 800.737.2166