

# MOSSCREEK

RUSTIC AMERICAN HOME DESIGN

# KOKANEE



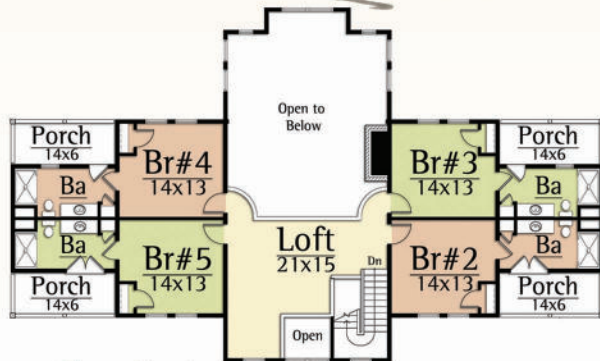
Copyright 2012 MossCreek  
www.MossCreek.net  
800.737.2166

Kokanee are the land locked form of sockeye salmon. Successful kokanee fishing is a recognized as a highly skilled art.

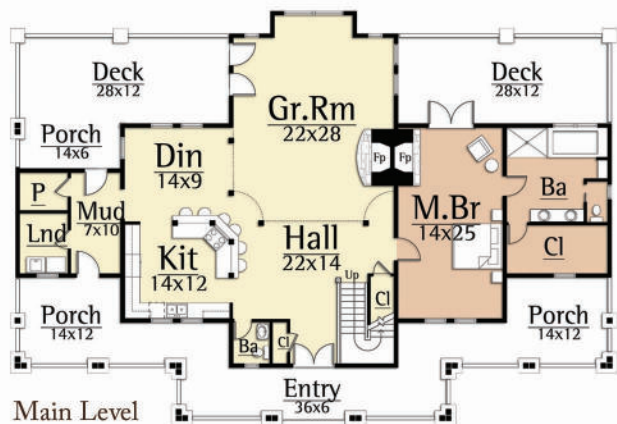
The Kokanee by MossCreek captures a similar high artistic achievement of rustic luxury. As the perfect family lodge, the design features 5 bedrooms, 5 1/2 baths, with a master on the main level. The design also includes two story vaulted Great Room with exposed timber trusses and stone fireplace. To ensure everyone remains part of the fun, the Kitchen and Dining Room open to the Great Room.

Exterior timber and shake detailing complete the feel of this modern family lodge.

**KOKANEE**  
*3,906 total square feet*



Upper Level  
*1,612 square feet*



Main Level  
*2,294 square feet*

Copyright 2012 MossCreek

www.MossCreek.net • 800.737.2166